

HASSAN VALLEY TOWNSHIP

Each township has six files containing six sections in each, and one file containing all 36 sections.

HassanValley01to06.pdf
HassanValley07to12.pdf
HassanValley13to18.pdf
HassanValley19to24.pdf
HassanValley25to30.pdf
HassanValley31to36.pdf
HassanValleyAll36.pdf

The points are listed starting with the point above the SE corner and continuing in a counter-clockwise rotation around the section. This normally begins with the East point, Northeast, then North, but may also include Witness Corners, and/or Meander Corners.

Definitions

Witness Corner: A witness corner “stands in” when the true corner cannot be monumented or occupied because of difficult terrain or obstruction of the corner sight. The witness corner must be on the section line and is usually 5 or 10 chains away from the true corner.

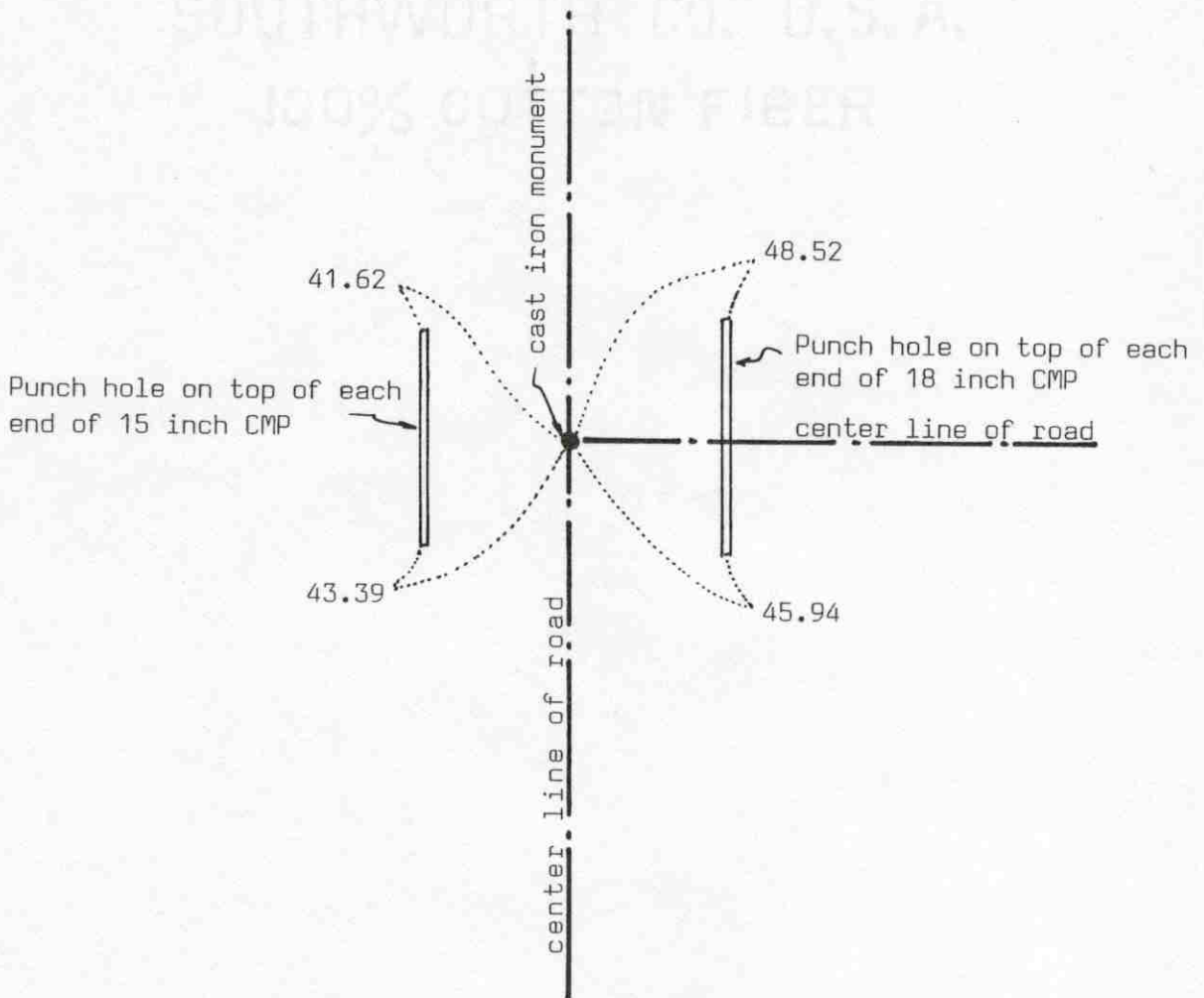
Meander Corner: The intersection of a township, range, or section line and the banks of a navigable stream or meandering body of water.

Certificate of Location of Government Corner

SKETCH OF REFERENCE TIES
(NO SCALE)

SECTION 13, T. 116, R. 29

SECTION 18, T. 116, R. 28



Statement of evidence relative to this corner location on sheet 2

I hereby certify that this document was prepared by me or under my direct supervision.

Willard Pellinen
Willard Pellinen
McLeod County Surveyor
License No. 9626

Date July 17, 1990

OFFICE OF THE COUNTY RECORDER
MCLEOD COUNTY, MINNESOTA.

I hereby certify that this document was filed in this office at 2 o'clock P.M. on the 23rd day of July, 1990.

Carmen Ostlie, County Recorder

By _____, Deputy

Document No. 234562

Certificate of Location of Government Corner

This corner was established by the government in 1855. John Ryan set a post and had ties to 2 trees.

April 16, 1970. McCombs Knutson Associates (Dickman Knutson, county surveyor) dug for the corner, John Tupa from Hutchinson with a backhoe. They found a 1 inch diameter iron pin down $2\frac{1}{2}$ feet below the road surface. They took reference ties.

19???. Knutson set a McLeod County cast iron monument at the corner. This is on the center line intersection of roads.

November 3, 1987. We found the monument in good condition and took new reference ties. We measured the east line of Section 13 and found the corner within $4\frac{1}{2}$ feet of being half way between the section corners and within 1 foot of being on a straight line between the section corners.

June 20, 1989. We found the monument and the reference ties good.

We accept the iron pin found by Knutson as having perpetuated the correct location of the quarter corner.

PARCHMENT DEED

SOUTHWORTH CO. U.S.A.

100% COTTON FIBER

Certificate of Location of Government Corner

SKETCH OF REFERENCE TIES

(NO SCALE)



SECTION 12
T. 116, R. 29

SECTION 7
T. 116, R. 28

1/2 inch diam. iron pipe
in shoulder of road

42.06

1/2 inch diam iron pipe
in shoulder of road

39.55

center line of road

cast iron monument

282.01

Nail and bottle cap
North face of power pole

48.68

Nail and bottle cap
SW face of power pole

SECTION 13
T. 116, R. 29

SECTION 18
T. 116, R. 28

center line of road

Statement of evidence relative to this corner location on sheet 2

I hereby certify that this document was prepared by me or under my direct supervision.

Willard Pellinen

Willard Pellinen
McLeod County Surveyor
License No. 9626

Date July 20, 1991

OFFICE OF THE COUNTY RECORDER
MCLEOD COUNTY, MINNESOTA.

I hereby certify that this document was filed in this office at 9 o'clock A..M. on the 31st day of July, 1991.

Carmen Ostlie, County Recorder

By _____, Deputy

Document No. 240171

Certificate of Location of Government Corner

In July, 1855, the public Land Survey was run by John Ryan. He set a post at this corner and marked 2 elms, an aspen and an ash for bearing trees.

May 3, 1904. Field notes by E. L. Higgins, surveyor, show a distance of 2686 feet to the east quarter corner of Section 12.

June 1, 1923. Carlisle Madson, Sr., county surveyor, found a large rock with a drill hole.

June 18, 1923. Madson's field notes show a stone with a drill hole at the corner and he measured 2671.7 feet to the east quarter corner of Section 12.

April 16, 1970. McCombs Knutson Associates (Dickman Knutson, county surveyor) dug for the corner. They found a large stone with a drill hole on top and wood stake by the stone. The stone was down 2 feet below the road surface. They took available reference ties.

19??. Knutson set a McLeod County cast iron monument at the corner.

March 4, 1986. We found no reference ties remaining. We found the monument down 4 inches below the road surface and took available ties.

November 31, 1987. We measured the north and east lines of Section 13 and the east line of Section 12. We measured 2670.34 feet to the east quarter corner of Section 12, compared with 2671.7 feet by Madson in 1923.

June 5, 1990. We found the monument in good condition and checked the reference ties.

We believe the stone found by Knutson is the same stone found by Madson in 1923 and that it has perpetuated the correct location of the section corner.

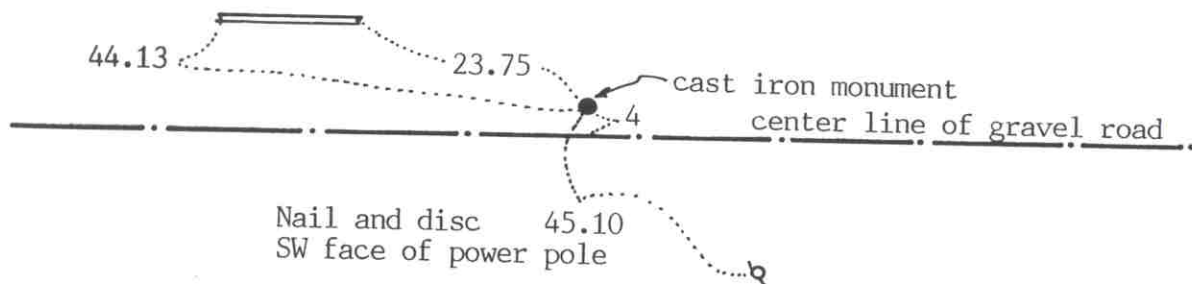
Certificate of Location of Government Corner



SKETCH OF REFERENCE TIES
(NO SCALE)

SECTION 12

Punch hole on top of each end of CMP



SECTION 13

Statement of evidence relative to this corner location on sheet 2

I hereby certify that this document was prepared by me or under my direct supervision.

Willard Pellinen
Willard Pellinen
McLeod County Surveyor
License No. 9626

Date July 21, 1991

OFFICE OF THE COUNTY RECORDER
MCLEOD COUNTY, MINNESOTA.

I hereby certify that this document was filed in this office at 9 o'clock A.M. on the 31st day of July, 1991.

Carmen Ostlie, County Recorder

By _____, Deputy

Document No. 240172

NORTH QUARTER corner, Section 13, Township 116 North, Range 29 West

Certificate of Location of Government Corner

In August, 1855, the Public Land Survey was run by A. H. Runyon, He set a post, drove charred stake, raised mound with trench....etc.

May 7, 1976. We dug for the corner, John Tupa from Hutchinson with a backhoe. We found (2) 2 inch by 4 inch stakes down 2 feet below the road surface. We took ties and dug below the stakes and found a 24 inch diameter stone below the stakes.

July 6, 1976. We set a McLeod County cast iron monument over the stone and took additional reference ties.

This corner is within 0.7 foot of being half way between the section corners and 1.4 feet north of a straight line between the corners.

June 5, 1990. We found the monument in good condition and checked the reference ties.

We accept the stone we found as marking the true quarter corner.

Certificate of Location of Government Corner

SKETCH OF REFERENCE TIES
(NO SCALE)



SECTION 14

SECTION 13

Nail and disc in East face of post for UG Tel. 161.30

cast iron monument

center line of bit. road

42.85

chiseled + on top of each end of conc. culv.

fence

29.90

40.18

Punch hole on top of each end of CMP

64.27

Statement of evidence relative to this corner location on sheet 2

I hereby certify that this document was prepared by me or under my direct supervision.

Willard Pellinen
Willard Pellinen
McLeod County Surveyor
License No. 9626

Date July 21, 1991

OFFICE OF THE COUNTY RECORDER
MCLEOD COUNTY, MINNESOTA.

I hereby certify that this document was filed in this office at 9 o'clock A.M. on the 31st day of July, 1991.

Carmen Ostlie, County Recorder

By _____, Deputy

Document No. 240173

Certificate of Location of Government Corner

August, 1855. A. H. Runyon of the General Land Office set a post and marked an aspen for a bearing tree. He dug trench, etc. as per instructions.

1899. Field notes by E.L.Higgins, county surveyor, show a "post" at the corner.

1935. Field notes by Higgins show an iron pipe at the corner.

1941. County highway department field notes show an iron pin at the corner.

May 19, 1977. We dug for the corner, John Tupa from Hutchinson with a backhoe. Down 3 feet below the road surface we found a $1\frac{1}{2}$ inch diameter iron pipe. We took reference ties and left the pipe in place.

September 12, 1977. We set a spike at the corner and took additional reference ties.

June 13, 1979. We set a McLeod County cast iron monument and checked the ties.

July 5, 1979. We took new reference ties to the corner.

We measured 2635.61 feet to the northeast corner of Section 14, compared with 2635 feet in 1899 by E.L.Higgins. We measured 2633.75 feet to the southeast corner compared with 2635 feet by Higgins.

June 5, 1990. We found the monument in good condition and checked the reference ties.

We believe the iron pipe we found in 1977 is the same pipe shown in the 1935 field notes by Higgins and that it had perpetuated the correct location of the quarter corner.

Certificate of Location of Government Corner

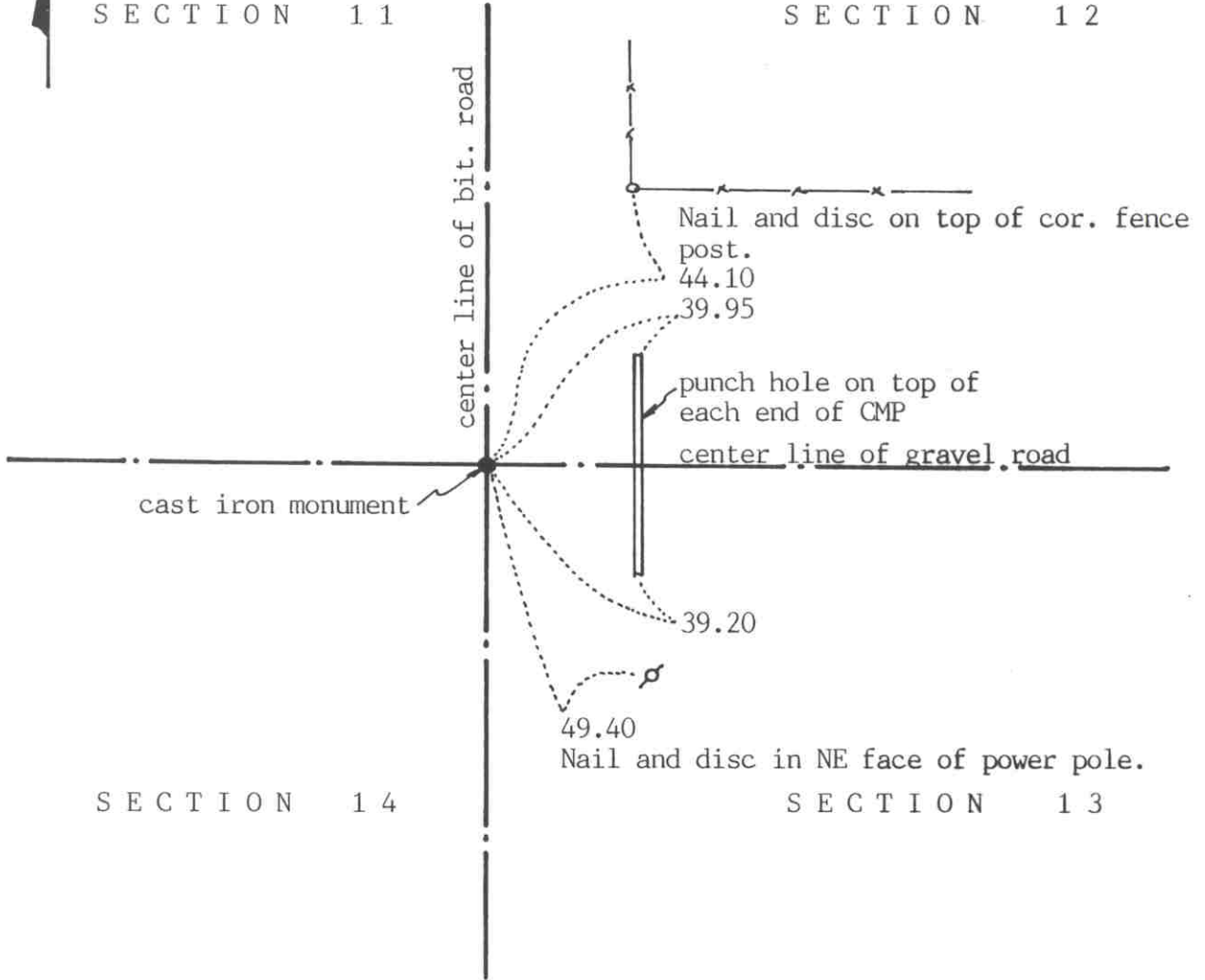


SKETCH OF REFERENCE TIES

(NO SCALE)

SECTION 11

SECTION 12



Statement of evidence relative to this corner location on sheet 2

I hereby certify that this document was prepared by me or under my direct supervision.

Willard Pellinen
 Willard Pellinen
 McLeod County Surveyor
 License No. 9626

Date July 7, 1991

OFFICE OF THE COUNTY RECORDER
 MCLEOD COUNTY, MINNESOTA.

I hereby certify that this document was filed in this office at 9 o'clock A.M. on the 10th day of July, 1991.

Carmin Ollie, County Recorder

By _____, Deputy

Document No. 239854

Certificate of Location of Government Corner

August, 1855. A.H.Runyon of the General Land Office set a post and marked 2 aspens for bearing trees.

1923. Carlisle Madson, Sr., county surveyor, found an iron pipe under a stone.

1941. County Highway Department found an iron pin at the corner.

May 19, 1977. We found a 1½ inch diameter iron pin down 2 feet below the road surface. We dug down to original ground but found nothing else. We took ties to the pin.

September 12, 1977. We set a spike at the corner and took additional reference ties.

June 13, 1979. We set a McLeod County cast iron monument.

April 20, 1981. We found the monument in good condition.

June 5, 1990. We found the monument in good condition and checked the reference ties.

We accept the iron pin we found as having perpetuated the correct location of the section corner.

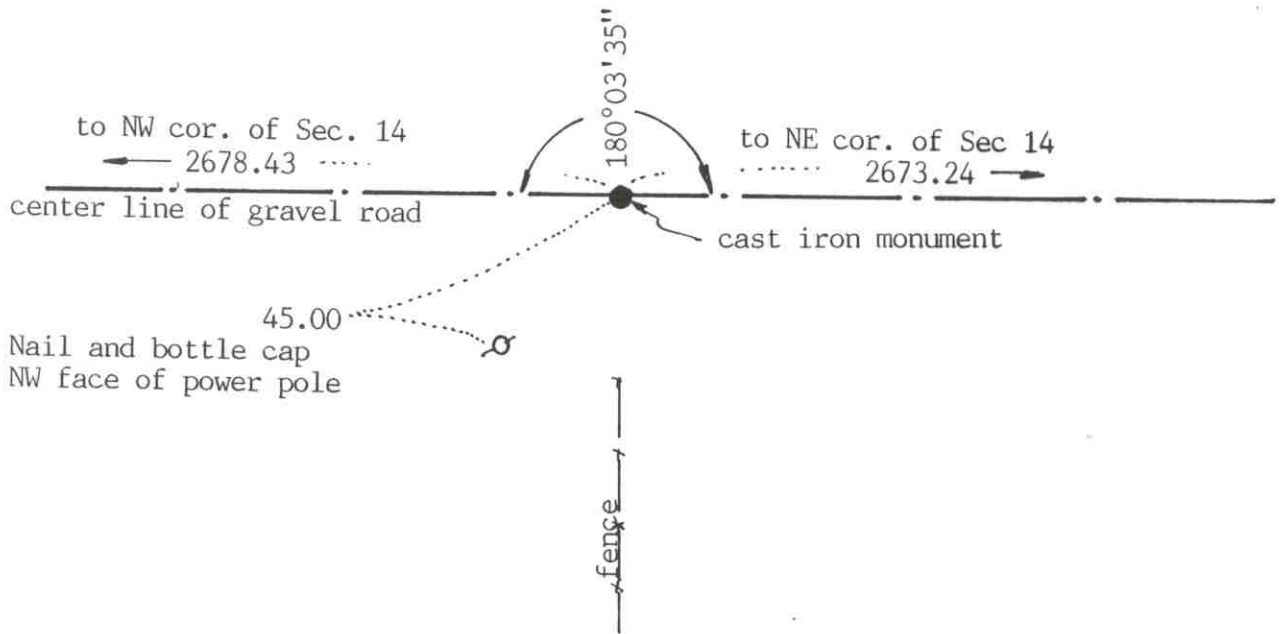
Certificate of Location of Government Corner



SKETCH OF REFERENCE TIES

(NO SCALE)

SECTION 11



SECTION 14

Statement of evidence relative to this corner location on sheet 2

I hereby certify that this document was prepared by me or under my direct supervision.

Willard Pellinen

Willard Pellinen
McLeod County Surveyor
License No. 9626

Date July 8, 1991

OFFICE OF THE COUNTY RECORDER
MCLEOD COUNTY, MINNESOTA.

I hereby certify that this document was filed in this office at 9 o'clock A.M. on the 31st day of July, 1991.

Carmen Ostlie, County Recorder

By _____, Deputy

Document No. 240174

NORTH QUARTER corner, Section 14, Township 116 North, Range 29 West

Certificate of Location of Government Corner

August, 1855. A.H.Runyon of the General Land Office set a post, drove a charred stake, raised mound with trench as per instructions and planted apple seeds southeast.

1935. E.L.Higgins, county surveyor, set the corner on the center line of the east-west road on a straight line between the section corners.

May 19, 1977. We dug for the corner, John Tupa from Hutchinson with a backhoe. Down $3\frac{1}{2}$ feet below the road surface we found a rotted wood post. We took available reference ties.

July 8, 1977. We set a spike and took additional ties.

April 5, 1978. We set a McLeod County cast iron monument.

August 27, 1986. We measured the north line of Section 14 and had a distance of 2678.43 feet to the northwest corner, compared with 2679.8 by Higgins in 1935. We measured 2673.24 feet to the northeast corner, compared with a distance of 2670.4 by Higgins. Our corner is 1.34 feet north of a straight line between the section corners.

June 5, 1990. We found the monument in good condition but only 1 reference tie remaining.

Certificate of Location of Government Corner

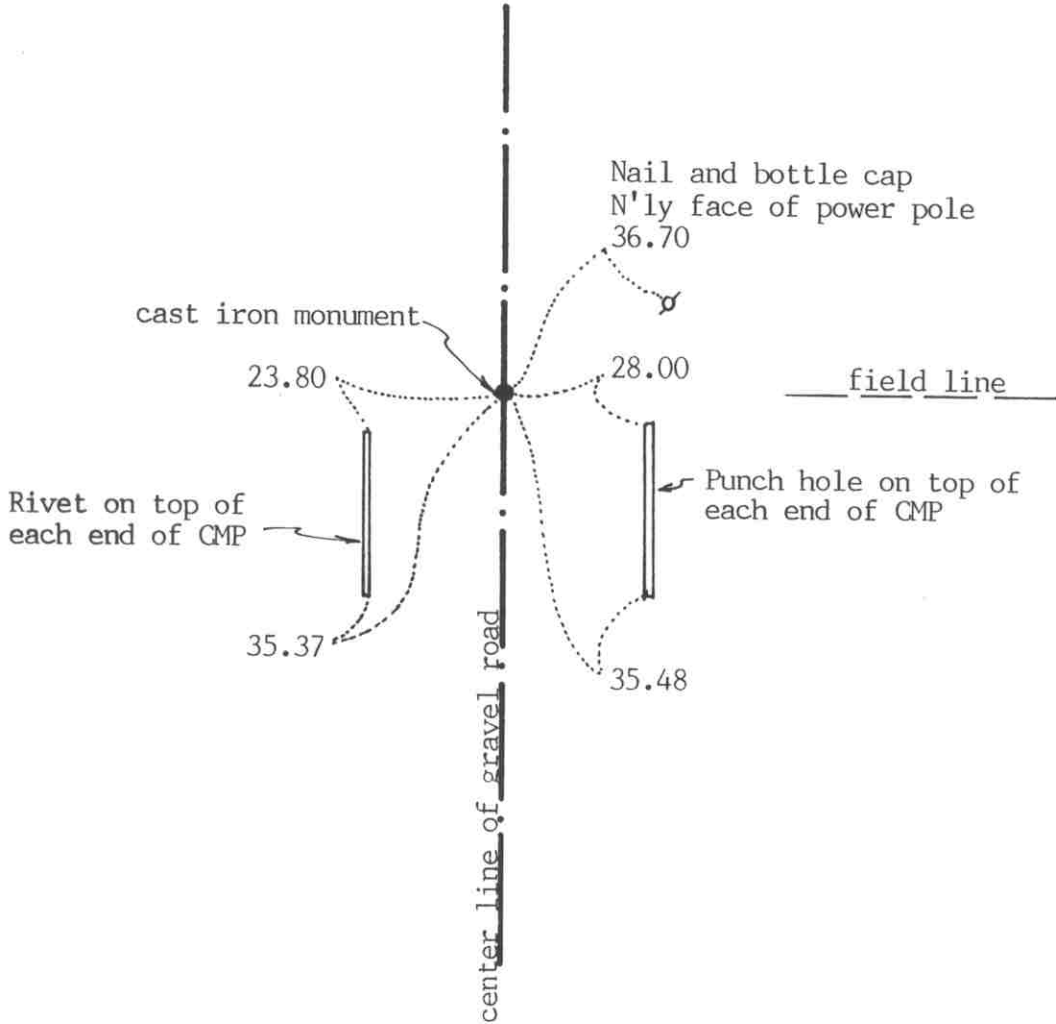
SKETCH OF REFERENCE TIES

(NO SCALE)



SECTION 15

SECTION 14



Statement of evidence relative to this corner location on sheet 2

I hereby certify that this document was prepared by me or under my direct supervision.

Willard Pellinen

Willard Pellinen
McLeod County Surveyor
License No. 9626

Date July 9, 1991

OFFICE OF THE COUNTY RECORDER
MCLEOD COUNTY, MINNESOTA.

I hereby certify that this document was filed in this office at 9 o'clock A.M. on the 31st day of July, 1991.

Carmen Ostlie, County Recorder

By _____, Deputy

Document No. 240175

EAST QUARTER corner, Section 15, Township 116 North, Range 29 West

Certificate of Location of Government Corner

August, 1855. A.H.Runyon of the General Land Office set a post and drove a charred stake, raised mound with trench as per instructions and planted apple seeds at the southeast corner of the mound.

1888. N.Y.Taylor, surveyor, set the quarter corner half way between the section corners.

1899. Field notes by E.L. Higgins, county surveyor, show a stone at the corner.

1935. E.L.Higgins' field notes show a 160 pound stone at the corner.

June 9, 1981. We dug for the corner, John Tupa from Hutchinson with a backhoe. We found a 14 inch diameter by 18 inch long stone, set with small point up. We took reference ties, moved the stone and found a wood stake below the stone.

July 2, 1981. We set a McLeod County cast iron monument at the corner.

This corner is within 1 foot of being on a split between the section corners.

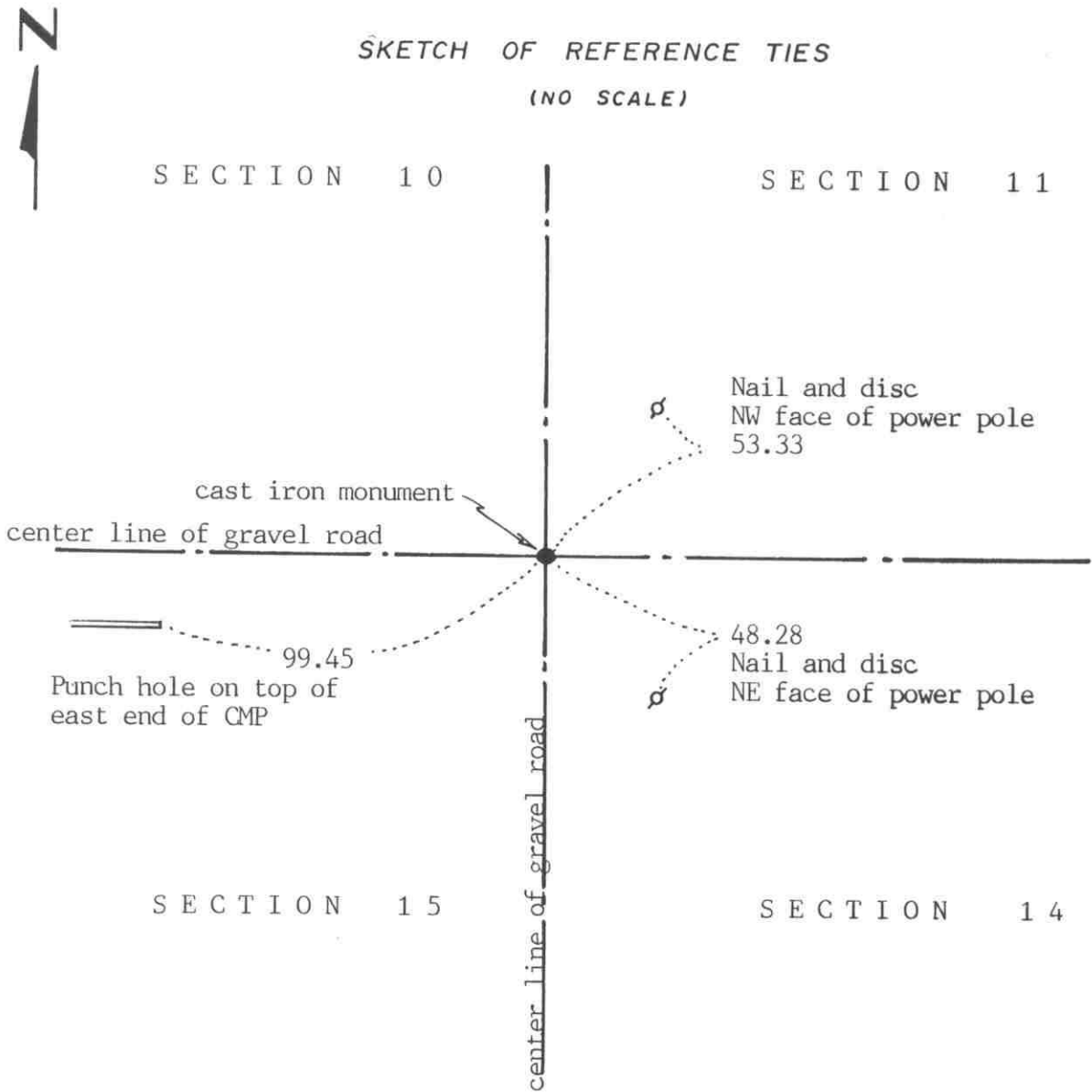
June 5, 1990. We found the monument in good condition and checked the reference ties.

We believe the stone we found is the same stone shown in the 1899 survey notes and that it had perpetuated the correct location of the quarter corner.

Certificate of Location of Government Corner

SKETCH OF REFERENCE TIES

(NO SCALE)



Statement of evidence relative to this corner location on sheet 2

I hereby certify that this document was prepared by me or under my direct supervision.

Willard Pellinen
 Willard Pellinen
 McLeod County Surveyor
 License No. 9626

Date July 7, 1991

OFFICE OF THE COUNTY RECORDER
 MCLEOD COUNTY, MINNESOTA.

I hereby certify that this document was filed in this office at 9 o'clock A.M. on the 10th day of July, 1991.

Carmen Helle, County Recorder

By _____, Deputy

Document No. 239855

Certificate of Location of Government Corner

August 1855. A.H.Runyon of the General Land Office set a post and marked a black cherry tree and 3 aspens for bearing trees.

August 29, 1935. E. L. Higgins, county surveyor, found a flat stone with a chiseled + on top and a $\frac{1}{2}$ inch diam. iron pipe on the east side of the stone.

May 19, 1977. We dug for the corner, John Tupa from Hutchinson with a backhoe. We found a $1\frac{1}{4}$ inch diameter iron pipe and a flat stone with a chiseled + on top down below the iron pipe. We also found a $\frac{1}{2}$ inch diameter iron pipe on the east side of the stone. We took ties to the chiseled + on the stone and left the stone and $\frac{1}{2}$ inch iron pipe in place.

July 8, 1977. We set a spike at the corner and took additional ties.

April 5, 1978. We set a McLeod County cast iron monument.

June 5, 1990. We found the monument in good condition and checked the reference ties.

We believe the stone we found was the same stone found by Higgins in 1935 and that it has perpetuated the correct location of the section corner.

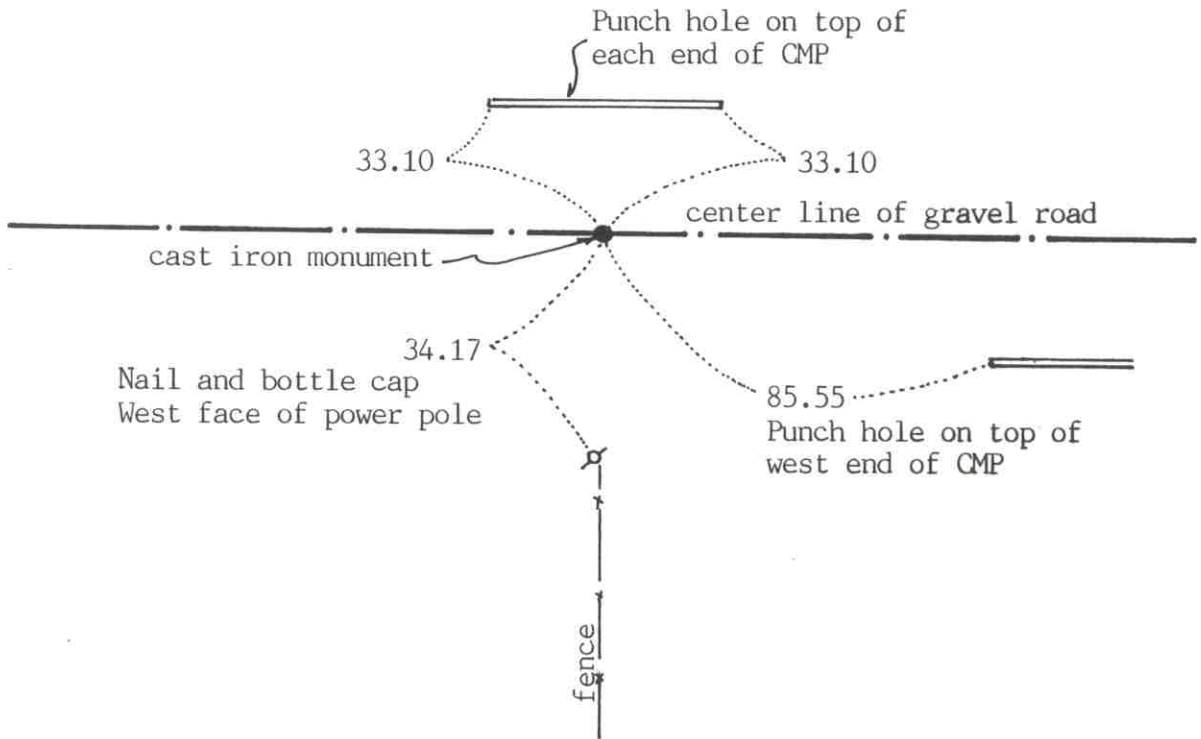
Certificate of Location of Government Corner



SKETCH OF REFERENCE TIES

(NO SCALE)

SECTION 10



SECTION 15

Statement of evidence relative to this corner location on sheet 2

I hereby certify that this document was prepared by me or under my direct supervision.

Willard Pellinen
 Willard Pellinen
 McLeod County Surveyor
 License No. 9626

Date July 7, 1991

OFFICE OF THE COUNTY RECORDER
 MCLEOD COUNTY, MINNESOTA.

I hereby certify that this document was filed in this office at 9 o'clock A.M. on the 10th day of July, 1991.

Carmen Bottie, County Recorder
 By _____, Deputy

Document No. 239856

NORTH QUARTER corner, Section 15, Township 116 North, Range 29 West

Certificate of Location of Government Corner

August, 1855. A.H.Runyon of the General Land Office set a post and marked 2 aspens for bearing trees.

September, 1899. E.L.Higgins, county surveyor, set an "iron" half way between the section corners.

March 14, 1977. We found an iron pin down 1 foot below the road surface and took available reference ties.

May 19, 1977. We dug for the corner, John Tupa from Hutchinson with a backhoe. Down $2\frac{1}{2}$ feet below the road surface, directly below the iron pin, we found a gear and shaft.

July 8, 1977. We set a spike at the corner and took additional reference ties.

April 5, 1978. We set a McLeod County cast iron monument at the corner.

August 23, 1988. We measured the north line of Section 15 and had 2637.17 feet to the northeast corner compared with a distance of 2637 feet by Higgins in 1899. We measured 2639.86 to the northwest corner, compared with 2637 feet in 1899. We found the corner to be 3.73 feet south of a straight line between the section corners.

June 5, 1990. We found the cast iron monument in good condition and checked the reference ties.

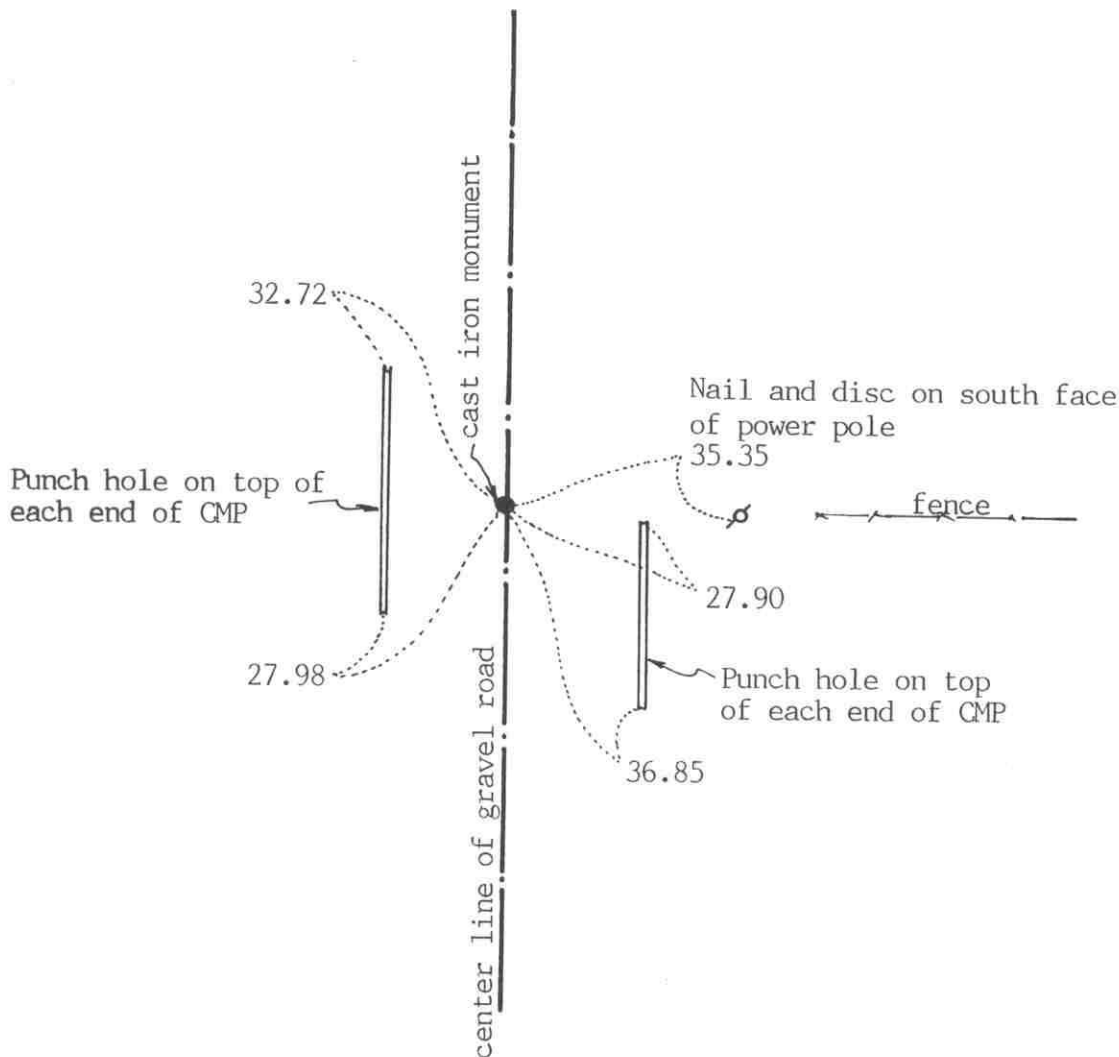
Certificate of Location of Government Corner

SKETCH OF REFERENCE TIES
(NO SCALE)



SECTION 16

SECTION 15



Statement of evidence relative to this corner location on sheet 2

I hereby certify that this document was prepared by me or under my direct supervision.

Willard Pellinen

Willard Pellinen
McLeod County Surveyor
License No. 9626

Date July 8, 1991

OFFICE OF THE COUNTY RECORDER
MCLEOD COUNTY, MINNESOTA.

I hereby certify that this document was filed in this office at 9 o'clock A.M. on the 31st day of July, 1991.

Carmen Ottlie, County Recorder

By _____, Deputy

Document No. 240177

EAST QUARTER corner, Section 16, Township 116 North, Range 29 West

Certificate of Location of Government Corner

August, 1855. A.H.Runyon of the General Land Office set a post, drove charred stake, raised mound of earth, dug trench and planted apple seeds at the southeast corner of the mound.

May, 1899. E.L.Higgins, county surveyor, found a stone at the corner.

1977. Myron Hassman, 64 years old, who has lived in the Northwest Quarter of Section 15 all his life, said road was rebuilt 35 years ago and a stone was found on the center line of the road in line with the fence running east. Paul Hemmann 69 years old, in the southeast quarter of Section 16 for 40 years, also said the corner is the center line of the road in line with the fence.

May 19, 1977. We dug for the corner, John Tupa from Hutchinson with a backhoe. We dug a hole 12 by 8 feet by 4 feet deep (below the original ground) but found nothing.

July 11, 1977. We set a spike on the center line of the road in line with the fence and took reference ties.

April 5, 1978. We set a McLeod County cast iron monument at the corner.

August 23, 1988. We measured the east line of Section 16 and found the corner to be 35.7 feet south of a split between the section corners and approximately 1 foot east of a straight line. Our distance to the southeast corner is 2607.94 feet, compared with a distance of 2608 feet by Higgins in 1899.

June 5, 1990. We found the monument in good condition and checked the reference ties.

We believe the fence and the center of the road have perpetuated the correct location of the quarter corner.

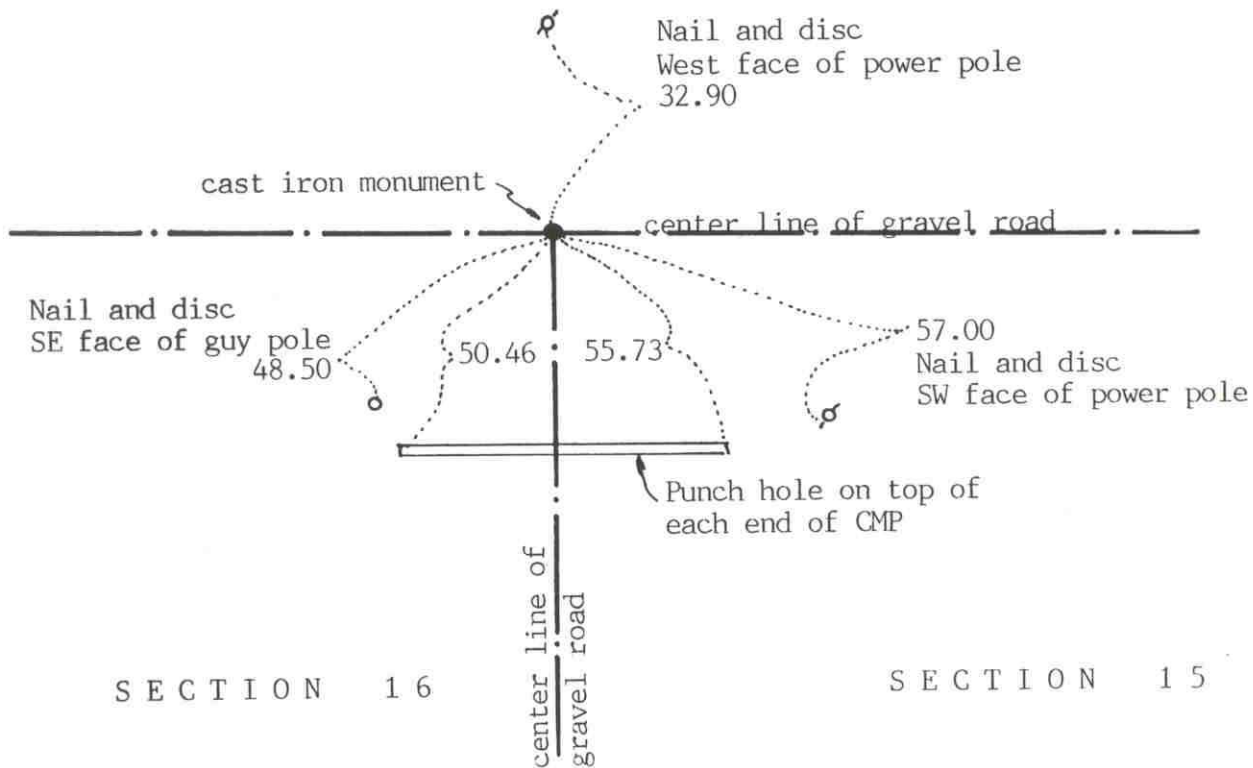
Certificate of Location of Government Corner



SKETCH OF REFERENCE TIES
(NO SCALE)

SECTION 9

SECTION 10



SECTION 16

SECTION 15

Statement of evidence relative to this corner location on sheet 2

I hereby certify that this document was prepared by me or under my direct supervision.

Willard Pellinen
Willard Pellinen
McLeod County Surveyor
License No. 9626

Date July 8, 1991

OFFICE OF THE COUNTY RECORDER
MCLEOD COUNTY, MINNESOTA.

I hereby certify that this document was filed in this office at 9 o'clock A.M. on the 31st day of July, 1991.

Carmen Botchie, County Recorder

By _____, Deputy

Document No. 240176

NORTHEAST corner, Section 16, Township 116 North, Range 29 West

Certificate of Location of Government Corner

August, 1855. A.H.Runyon of the General Land Office set a post, drove charred stake, raised mound with trench as per instructions and planted apple seeds at the southeast corner of the mound.

1899. E.L.Higgins, County Surveyor, found a stone at the corner.

1921. Lew Merrill, surveyor, found a stone at the corner at the intersection of the roads. He says stone was placed at the corner by L.A.Ritter and father around 1896.

May 19, 1977. We dug for the corner, John Tupa from Hutchinson with a backhoe. We found a stone down about $1\frac{1}{2}$ feet below the surface, We took reference ties and moved the stone to make room for a cast iron monument. Below the stone we found a wood stake.

July 8, 1977. We set a spike at the corner and took additional reference ties.

April 5, 1978. We set a McLeod County cast iron monument.

February 15, 1985. We found the monument in good condition and measured 2639.86 feet to the north quarter corner of Section 15, compared with a distance of 2637 feet by Higgins in 1899.

June 5, 1990. We found the monument in good condition and checked the reference ties.

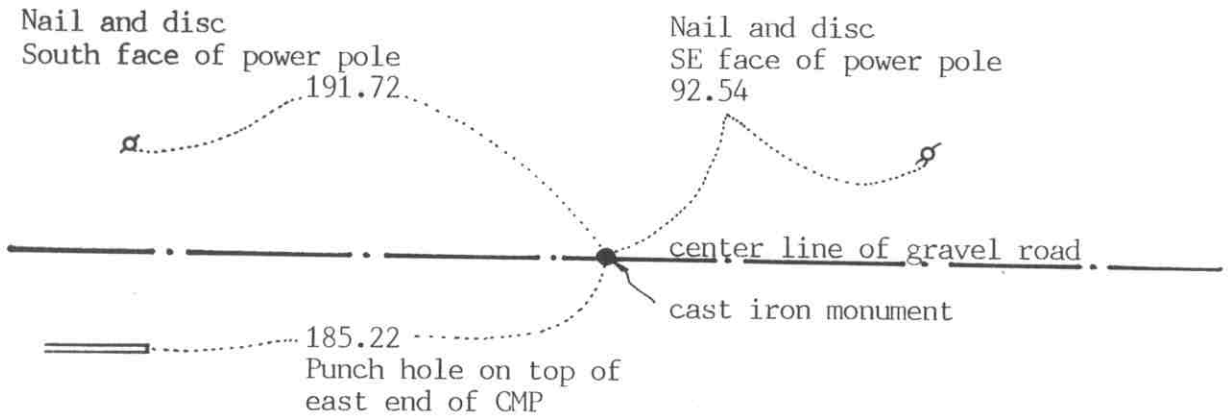
We believe the stone we found was the same stone which Higgins found in 1899 and Merrill found in 1921 and that it had perpetuated the correct location of the section corner.

Certificate of Location of Government Corner



SKETCH OF REFERENCE TIES
(NO SCALE)

SECTION 9



SECTION 16

Statement of evidence relative to this corner location on sheet 2

I hereby certify that this document was prepared by me or under my direct supervision.

Willard Pellinen
Willard Pellinen
McLeod County Surveyor
License No. 9626
Date Oct. 6, 1991

OFFICE OF THE COUNTY RECORDER
MCLEOD COUNTY, MINNESOTA.

I hereby certify that this document was filed in this office at 1 o'clock P.M. on the 8th day of Oct, 1991.

Carmen Ostlie, County Recorder
By _____, Deputy

Document No. 241403

NORTH QUARTER corner, Section 16, Township 116 North, Range 29 West

Certificate of Location of Government Corner

1855. This corner was originally set by A. H. Runyon of General Land Office. He set a post and marked an aspen for a bearing tree. He also dug trenches and raised mound as per instructions.

March 4, 1977. McCombs Knutson Associates (Dickman Knutson, county surveyor) measured the north line of Section 16 and set a temporary corner on the center line of the east-west road on the southerly extension of a fence in the north half of Section 9 and the northerly extension of a field line from the south.

May 19, 1977. Knutson dug for the corner, John Tupa from Hutchinson with a backhoe. They dug a hole 25 feet long, 4-5 feet wide and 4 feet deep but found nothing marking the quarter corner.

May 5, 1978. Knutson talked with Mr. Herb Filk, 70 years old, a long time resident of the area. He owns land in Section 9 and in Section 16 on both sides of the quarter corner. The farm has been in the family for 3 generations. He said there used to be a fence along the north-south quarter line of Section 9, and he pointed out the spot on the center line of the road where the southerly extension of the fence would have intersected the center line. He was very positive of the location.

August 11, 1978. Knutson set a McLeod County cast iron monument at the location pointed out by Mr. Filk, and took reference ties. The quarter corner falls 11.87 feet east of being midway between the section corners and 5.90 feet north of a straight line between the section corners.

There being no evidence to the contrary, we accept the monument set by Knutson as marking the correct location of the quarter corner.

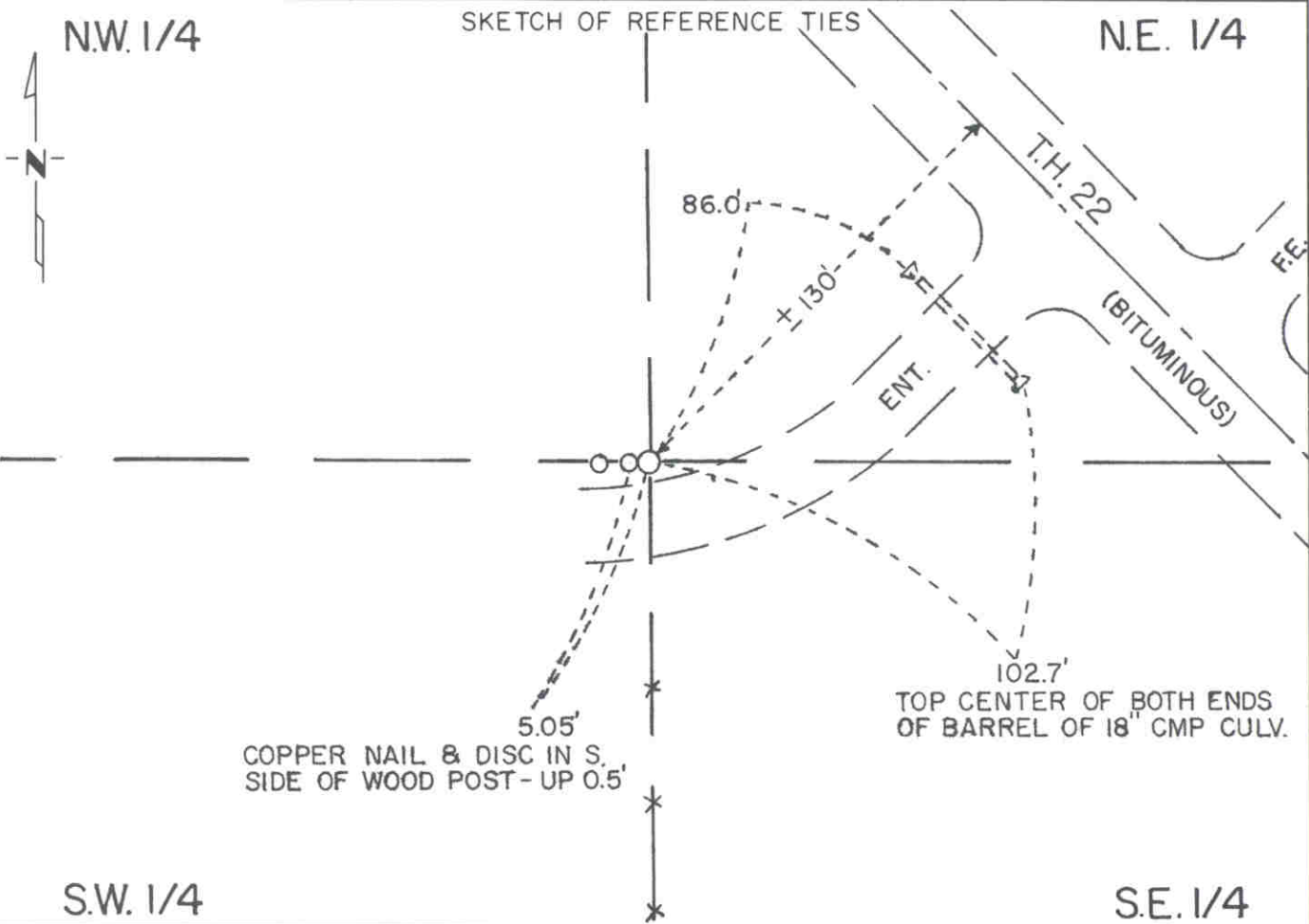
CERTIFICATE OF LOCATION OF GOVERNMENT CORNER

Center Quarter _____ Corner of Section 16, Township 116N, Range 29W, 5th P.M.

STATE OF MINNESOTA, County of McLeod

At the corner location shown on the sketch:

- On April 18, '88 found a 1/2" diameter iron pipe projecting about 2" above
DATE the ground.
- left monument as found, lowered monument, removed monument (explain)
- On _____ placed a _____
DATE



Statement of evidence relative to this corner location is on back of page.

I hereby certify that this document and the data contained herein was prepared by me or under my direct supervision.

Robert G. Janis MAY 6, 1988
SIGNATURE DATE

- Registration No. 11864
- Land Surveyor, Professional Engineer
 - County Surveyor, County Engineer

OFFICE OF THE COUNTY RECORDER
 County of McLeod

I hereby certify that this document was filed in the Co. Recorders office at 9 A. .M. on the 15th day of June A.D., 1988

County Recorder Erma D. Dillie
 By _____, Deputy
 DOCUMENT NO. 223255

Statement of Evidence: Center Quarter Corner Section 16, T116N, R29W

- 1855 - The original Public Land Survey was completed by A.H. Runyon. This corner was not set in the original survey because the instructions did not require that it be set.
- 1987 - A Mn/Dot survey crew found an iron pipe marking the corner. It was tied into the McLeod County Coordinate System (based on State Plane Coordinates, NAD 83, South Zone).
- 1988 - R.C. Jones, R.L.S. with Mn/Dot recovered the corner and set reference ties. The iron pipe was probably set by Willard Pellinen, McLeod County Surveyor, sometime in the last 7 or 8 years. It is accepted as the location of the center of section because it is within 2 feet of being at intersection of quarter lines as determined by the 1987 Mn/Dot survey.

For further survey information, contact the Mn/Dot Surveys Section at Willmar, Mn 56201

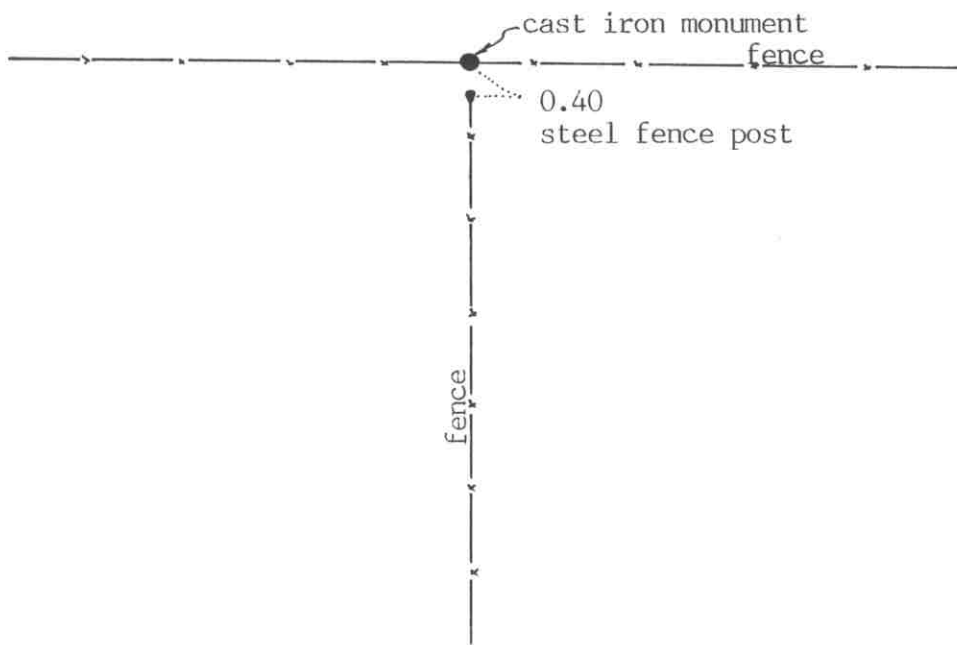
Certificate of Location of Government Corner

SKETCH OF REFERENCE TIES
(NO SCALE)



SECTION 17

SECTION 16



Statement of evidence relative to this corner location on sheet 2

I hereby certify that this document was prepared by me or under my direct supervision.

Willard Pellinen
Willard Pellinen
McLeod County Surveyor
License No. 9626

Date Oct. 2, 1991

OFFICE OF THE COUNTY RECORDER
MCLEOD COUNTY, MINNESOTA.

I hereby certify that this document was filed in this office at 1 o'clock P.M. on the 8th day of Oct, 1991.

Carmen Ostlie, County Recorder

By _____, Deputy

Document No. 241404

East Quarter corner, Section 17, Township 116 North, Range 29 West

Certificate of Location of Government Corner

1855. A.H.Runyon set a post, drove charred stake, dug pits and trench, built mound, as per instructions and he planted apple seeds at the southeast side of the mound.

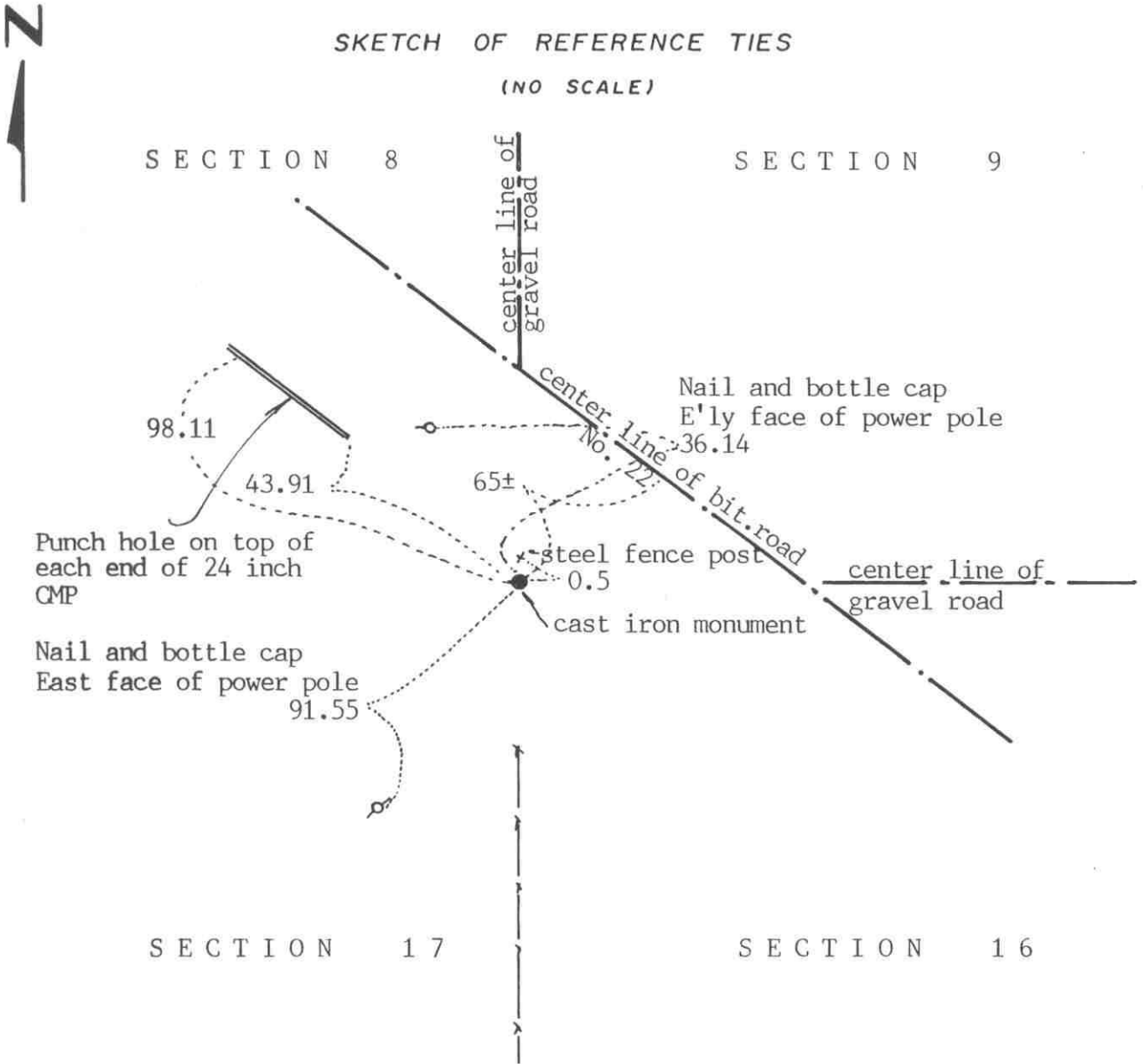
July 31, 1979. We set a McLeod County cast iron monument at the intersection of fences east, west and south. Mr. Herb Filk, 71 years old, a longtime area resident, said the fence corner has been there as long as he can remember. He owns the Northwest Quarter of Section 16 and the farm has been in the family for 3 generations. He stated the fence corner has always been accepted as the quarter corner by the adjoining land owners. This corner falls about 13 feet north of a split between the section corners and about 5.6 feet west of a straight line between the section corners.

July 13, 1990. We found the monument in good condition and checked the reference ties.

We believe the fence corner has perpetuated the correct location of the quarter corner.

Certificate of Location of Government Corner

SKETCH OF REFERENCE TIES
(NO SCALE)



Statement of evidence relative to this corner location on sheet 2

I hereby certify that this document was prepared by me or under my direct supervision.

Willard Pellinen
Willard Pellinen
McLeod County Surveyor
License No. 9626

Date August 25, 1991.

OFFICE OF THE COUNTY RECORDER
MCLEOD COUNTY, MINNESOTA.

I hereby certify that this document was filed in this office at 9 o'clock A.M. on the 27th day of August, 1991.

Carmen Ostlie, County Recorder

By _____, Deputy

Document No. 240562

NORTHEAST corner, Section 17, Township 116 North, Range 29 West

Certificate of Location of Government Corner

1855. A. H. Runyon of the General Land Office completed the original Public Land Survey. He drove a charred stake, raised mound with trench and pits as per instructions and planted apple seeds at the southeast corner of the mound.

1898. E.L.Higgins, county surveyor, set a stone using double proportionate measure between known corners.

July 25, 1925. Higgins set a 30 inch long steel axle at the corner. This was in line with a fence to the south.

September 1, 1971. McCombs Knutson Associates (Dickman Knutson, county surveyor) found a 30 inch steel axle at the corner. It was in line with the center line extensions of gravel roads to the east and north and in line with a fence to the south. Knutson set a McLeod County cast iron monument over the axle and took reference ties. This axle was also 65± feet southwest of the center line of State Highway No. 22.

June 18, 1990. We found the monument in good condition and took new reference ties.

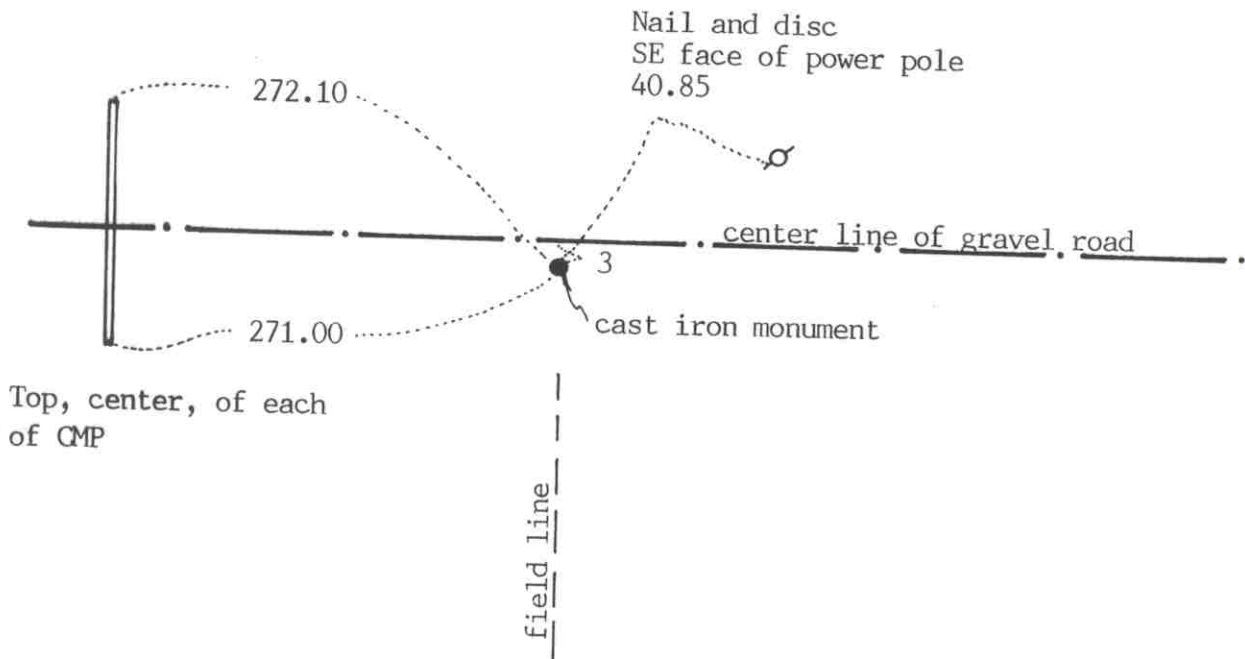
We accept the monument as marking the correct position of the section corner. We believe the axle found by Knutson is the same axle set by Higgins in 1925.

Certificate of Location of Government Corner



SKETCH OF REFERENCE TIES
(NO SCALE)

SECTION 8



SECTION 17

Statement of evidence relative to this corner location on sheet 2

I hereby certify that this document was prepared by me or under my direct supervision.

Willard Pellinen

Willard Pellinen
McLeod County Surveyor
License No. 9626

Date Sept. 1, 1991

OFFICE OF THE COUNTY RECORDER
MCLEOD COUNTY, MINNESOTA.

I hereby certify that this document was filed in this office at 1:30 o'clock P.M. on the 3rd day of Oct, 1991.

Carmen Ostlie, County Recorder

By _____, Deputy

Document No. 241305

Certificate of Location of Government Corner

1855. A. H. Runyon of the General Land Office "set quarter section post, drove charred stake and raised mound as per instructions." He planted apple seeds at the southeast corner of the mound.

February 5, 1898. E. L. Higgins, county surveyor, found a mound and a stone at the corner. He measured 2643 feet to the northwest corner and 2639 feet to the northeast corner of Section 17.

July 23, 1925. Higgins found a fence 19 feet west of the old corner which he found in 1898. Fence running south.

October 25, 1971. McCombs Knutson Associates (Dickman Knutson, county surveyor) found a stone down 1 foot below the surface, with a wood stake beside the stone. Stone was 10 inches in diameter and Knutson moved the stone to make room for a cast iron monument. Knutson took available reference ties.

November 2, 1971. Knutson set a McLeod County cast iron monument.

April, 1983. We found the monument and measured to the northwest and northeast corners of the section. We found a fence running south 19 feet west of the corner as shown in 1925 notes by Higgins. Our measurement to the northeast corner was 2.14 feet shorter than Higgins had in 1898 and 2.51 feet shorter to the northwest corner. The monument was 1.80 feet east and 0.75 feet north of a split and line between the section corners.

June 18, 1990. We found the monument in good condition and checked the reference ties.

We accept the monument set by Knutson as marking the correct position of the quarter corner. We believe the stone found by Knutson is the same stone found by Higgins in 1898.

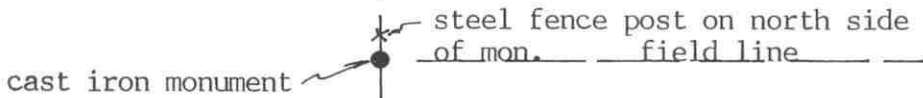
Certificate of Location of Government Corner



SKETCH OF REFERENCE TIES
(NO SCALE)

SECTION 18

SECTION 17



2645.20 to NE corner
2656.54 to SE corner

Angle from NE cor to SE cor on the west side of the line = $180^{\circ}54'07''$

Statement of evidence relative to this corner location on sheet 2

I hereby certify that this document was prepared by me or under my direct supervision.

Willard Pellinen
Willard Pellinen
McLeod County Surveyor
License No. 9626

Date August 29, 1991

OFFICE OF THE COUNTY RECORDER
MCLEOD COUNTY, MINNESOTA.

I hereby certify that this document was filed in this office at 1:30 o'clock P..M. on the 3rd day of Oct, 1991.

Carmen Ostlie, County Recorder

By _____, Deputy

Document No. 241307

Certificate of Location of Government Corner

1855. A.H.Runyon of the General Land Office "set quarter section post, drove charred stake, raised mound with trench as per instructions" and he planted apple seeds at the southeast corner of the mound.

1919. E.L.Higgins' field notes show the corner at the east end of an east-west fence along the quarter line. He shows a distance of 2634 feet to the northeast and 2674.6 feet to the southeast corner of the section.

1949. Survey shows the corner to be 2644.5 feet from the northeast corner and 2656.5 feet from the southeast corner of Section 18.

January 24, 1980. We found $3\frac{1}{2}$ inch diameter iron pipe 2645.2 feet from the northeast corner and 2656.54 feet from the southeast corner. The iron pipe was 20.68 feet west of a straight line between the section corners.

July 19, 1983. We pounded the iron pipe down and set a McLeod County cast iron monument over the pipe, top of monument flush with the surface of the ground, and set a steel fence post on the north side of the monument.

We accept the iron pipe we found as marking the quarter corner. It fits the location shown on the 1949 survey and is on the intersection of the field lines.

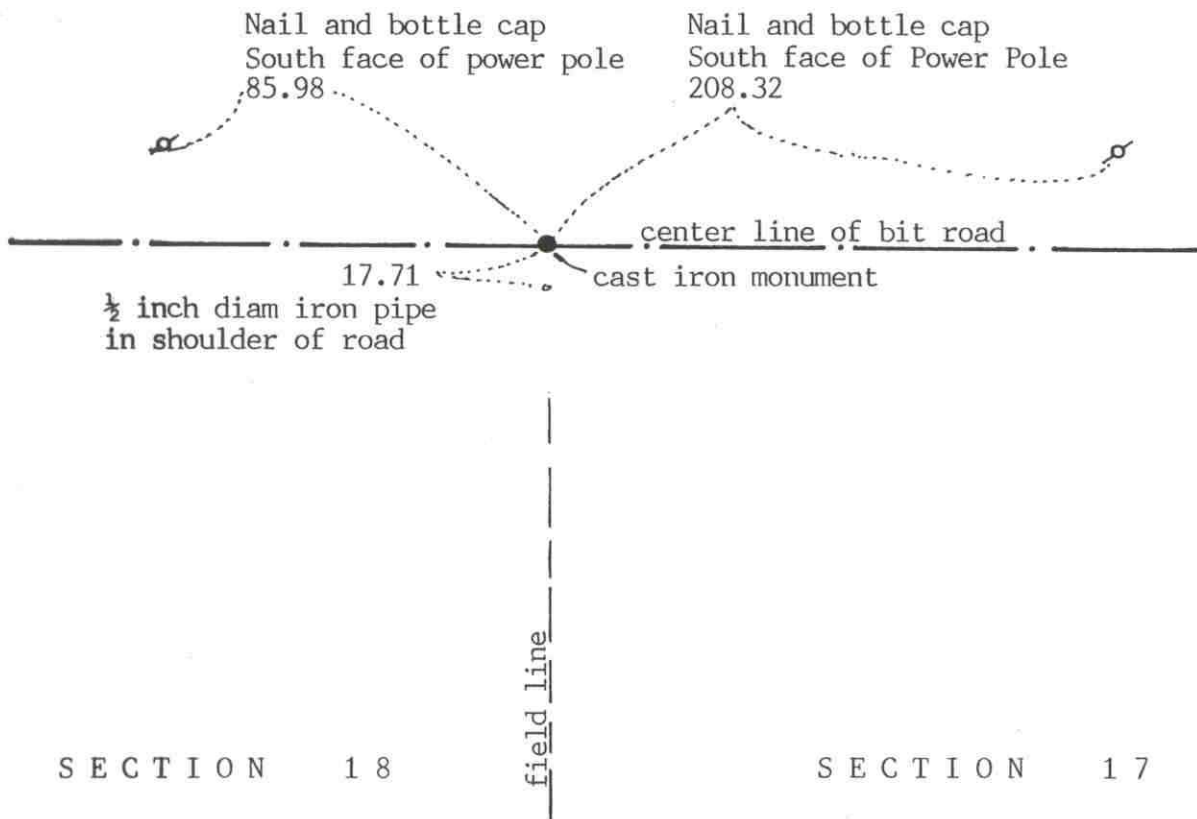
Certificate of Location of Government Corner



SKETCH OF REFERENCE TIES
(NO SCALE)

SECTION 7

SECTION 8



Statement of evidence relative to this corner location on sheet 2

I hereby certify that this document was prepared by me or under my direct supervision.

Willard Pellinen

Willard Pellinen
McLeod County Surveyor
License No. 9626

Date Sept. 2, 1991

OFFICE OF THE COUNTY RECORDER
MCLEOD COUNTY, MINNESOTA.

I hereby certify that this document was filed in this office at 1:30 o'clock P.M. on the 3rd day of Oct, 1991.

Armen Botlie, County Recorder

By _____, Deputy

Document No. 241306

NORTHEAST corner, Section 18, Township 116 North, Range 29 West

Certificate of Location of Government Corner

1855. A. H. Runyon of the General Land Office "drove charred stake, raised mound with trench as per instructions." He planted apple seeds at the southeast side of the mound.

October 25, 1971. McCombs Knutson Associates (Dickman Knutson, county surveyor) dug for the corner, John Tupa from Hutchinson with a backhoe. Down 2 feet below the road surface they found a 1 inch diameter steel pin with a rotted wood stake beside it. They took reference ties and left the steel pin in place.

November 2, 1971. Knutson set a McLeod County cast iron monument over the iron pin.

June 4, 1987. The corner had been destroyed by road construction. We reset a cast iron monument using the old reference ties and additional ties. Our distance to the north quarter corner of Section 18 and to the north Quarter corner of Section 17 is within $2\frac{1}{2}$ feet of 1898 distances by E.L.Higgins.

June 18, 1990. We found the monument in good condition and checked the reference ties.

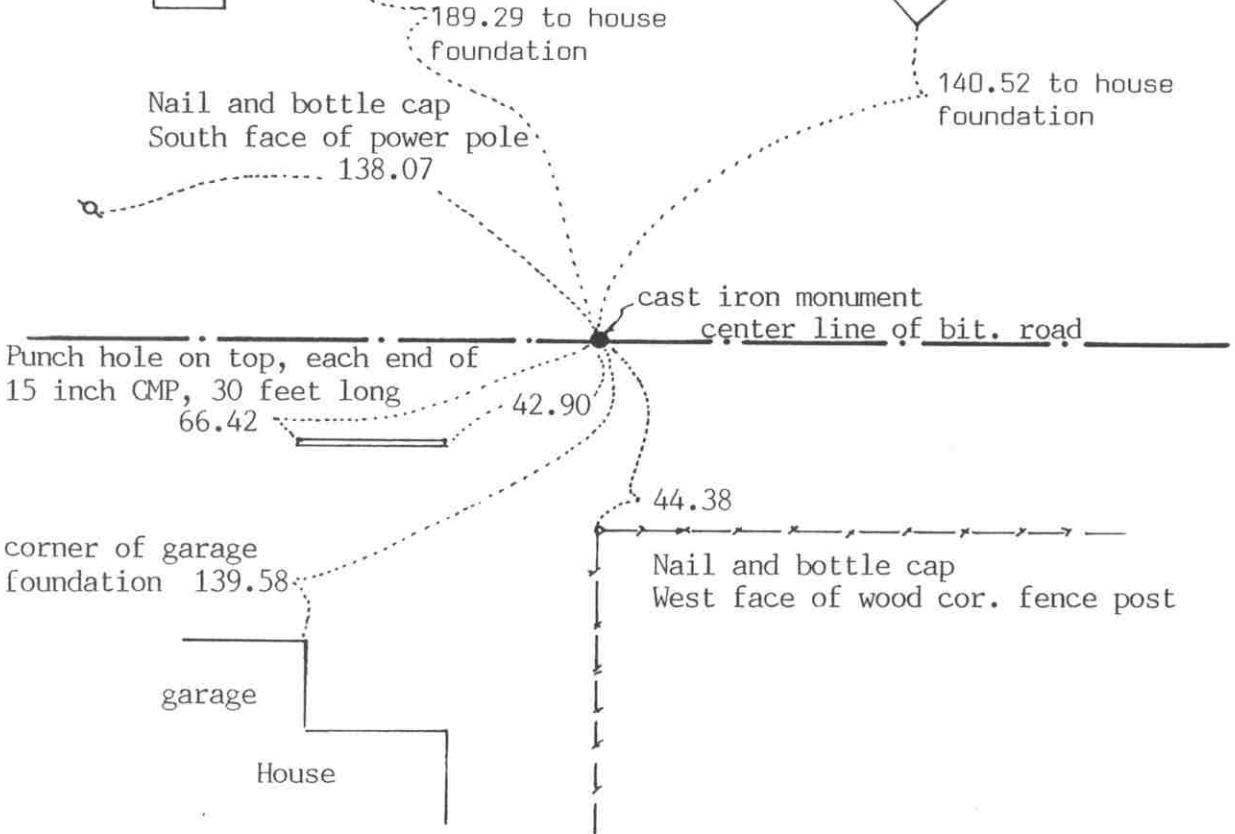
We accept the steel pin found by Knutson as having perpetuated the correct position of the section corner.

Certificate of Location of Government Corner

SKETCH OF REFERENCE TIES
(NO SCALE)



SECTION 7



SECTION 18

Statement of evidence relative to this corner location on sheet 2

I hereby certify that this document was prepared by me or under my direct supervision.

Willard Pellinen

Willard Pellinen
McLeod County Surveyor
License No. 9626

Date Sept. 1, 1991

OFFICE OF THE COUNTY RECORDER
MCLEOD COUNTY, MINNESOTA.

I hereby certify that this document was filed in this office at 3 o'clock P.M. on the 17th day of November, 1992.

Carmen Helie Mulder, County Recorder

By _____, Deputy

Document No. 248899

Certificate of Location of Government Corner

1855. A. H. Runyon of the General Land Office "set quarter section post, drove charred stake and raised mound with trench as per instructions." He planted apple seeds at the southeast side of the mound.

November 5, 1919. E.L.Higgins, surveyor, set a tile at the corner. He measured 2406.5 feet to northwest corner and 2657 feet to the northeast corner of the section.

November 23, 1970. McCombs Knutson Associates (Dickman Knutson, county surveyor) found a bolt in a 3 foot long iron pipe in the middle of broken tile. Knutson set a McLeod County cast iron monument and took reference ties.

May 11, 1973. Knutson took new reference ties.

April 5, 1982. We set a spike at the corner using the 1973 ties by Knutson. Monument destroyed by road construction.

June 4, 1987. We reset a cast iron monument at the corner and took additional reference ties.

June 18, 1990. We found the monument in good condition and checked the reference ties.

We accept the iron pipe found by Knutson in 1970 as having perpetuated the correct location of the quarter corner.

10/21/92 August 26, 1992. We took additional reference ties. (to house foundations to the northeast and northwest. Old ties (to culvert and fence post will be destroyed by road construction.

CERTIFICATE OF LOCATION OF GOVERNMENT CORNER

Northeast Corner of Section 13, Township 116 N, Range 30 W, 5th P.M.

STATE OF MINNESOTA, County of McLeod

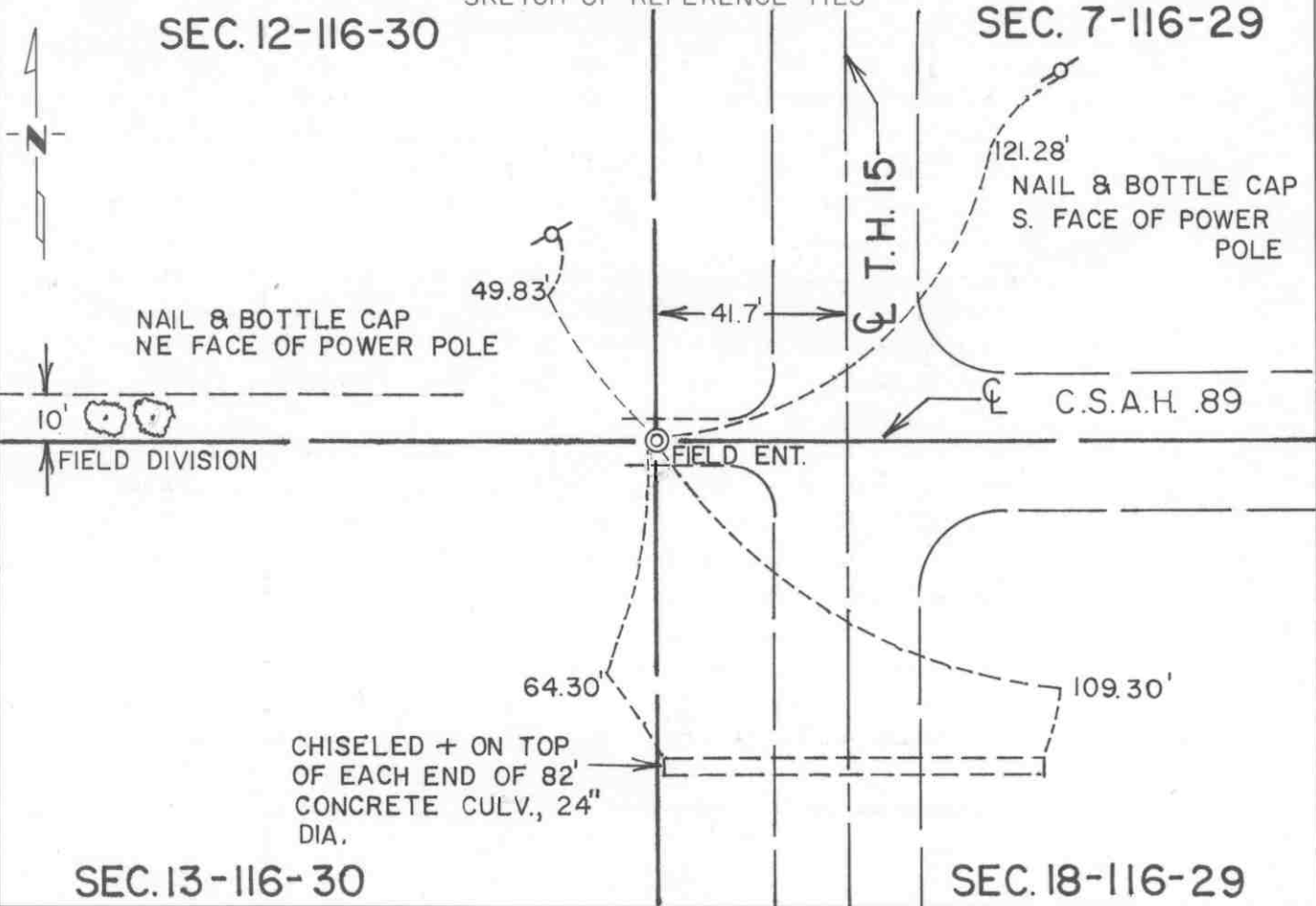
At the corner location shown on the sketch:

On June 13, 1991 found a 1/2" diameter iron pipe at the surface of a
DATE field entrance 41.72 feet west of centerline T.H. 15

left monument as found, lowered monument, removed monument (explain)

On _____ placed a _____
DATE

SKETCH OF REFERENCE TIES



Statement of evidence relative to this corner location is on back of page.

I hereby certify that this document and the data contained herein was prepared by me or under my direct supervision

Robert Jones 8-20-91
SIGNATURE DATE

Registration No. 11864

- Land Surveyor, Professional Engineer
- County Surveyor, County Engineer

OFFICE OF THE COUNTY RECORDER

County of McLeod

I hereby certify that this document was filed in the Co. Recorders office at 2 P .M. on the 18th day of sep A.D. 1991

County Recorder Armen Ostlie

By _____, Deputy

DOCUMENT NO. 241053

Statement of Evidence:

Northeast Corner Section 13, T 116 N, R 30 W

- 1855 - The original Public Land Survey of the township line was completed by John Ryan. A wood post was set over a deposit of charcoal in a dirt mound to mark the corner. Trenches and pits were dug to build the mound. Osage orange was planted at the corners of the mound.
- 1899 - E. L. Higgins, McLeod County Surveyor, found a stone at the corner.
- 1900 - E. L. Higgins' survey notes show that the stone was buried under 5 feet of earth.
- 1941 - The Minnesota Highway Department right of way map shows the corner to be 41.7 feet west of the T.H. 15 P.O.T. 1176+15.0. It was at the centerline of a north/south road, the centerline of a road east, and in line with a fence line to the west.
- 1965 - Lew Merrill showed the corner to be at the centerline of T.H. 15 when he surveyed the E 1/2 of the SE 1/4 of Section 12.
- 1969 - Dickman Knutson, McLeod County Surveyor, found an iron pipe 41.7 feet west of a spike found at the centerline of T.H. 15. He set reference ties and replaced the iron pipe with a McLeod County cast iron monument.
- 1983 - R. C. Jones, Registered Land Surveyor with Mn/DOT, found the bottom of the cast iron monument. The top had been broken off. It was located 41.60 feet west of T.H. 15 P.O.T. 1176+15.99. A certificate was filed with the McLeod County Recorder, Document No. 202055.
- 1987 - Willard Pellinen, McLeod County Surveyor, found the cast iron monument and set additional reference ties because it was due to be destroyed by road construction.
- 1989 - Willard Pellinen set an iron pipe to mark the corner.
- 1990 - A Mn/DOT survey crew recovered the iron pipe.
- 1991 - R. C. Jones, Registered Land Surveyor with Mn/DOT, found a 1/2" diameter iron pipe at the surface of a field entrance. The iron pipe is accepted as the corner location because it is 41.72 feet west of T.H. 15 P.O.T. 1176+16.73, which substantially fits the locations described in 1941 and 1983. It is in line with the centerline of County Road 18 to the east.

For additional information, contact the Mn/DOT Surveys Section at Willmar, Mn 56201.

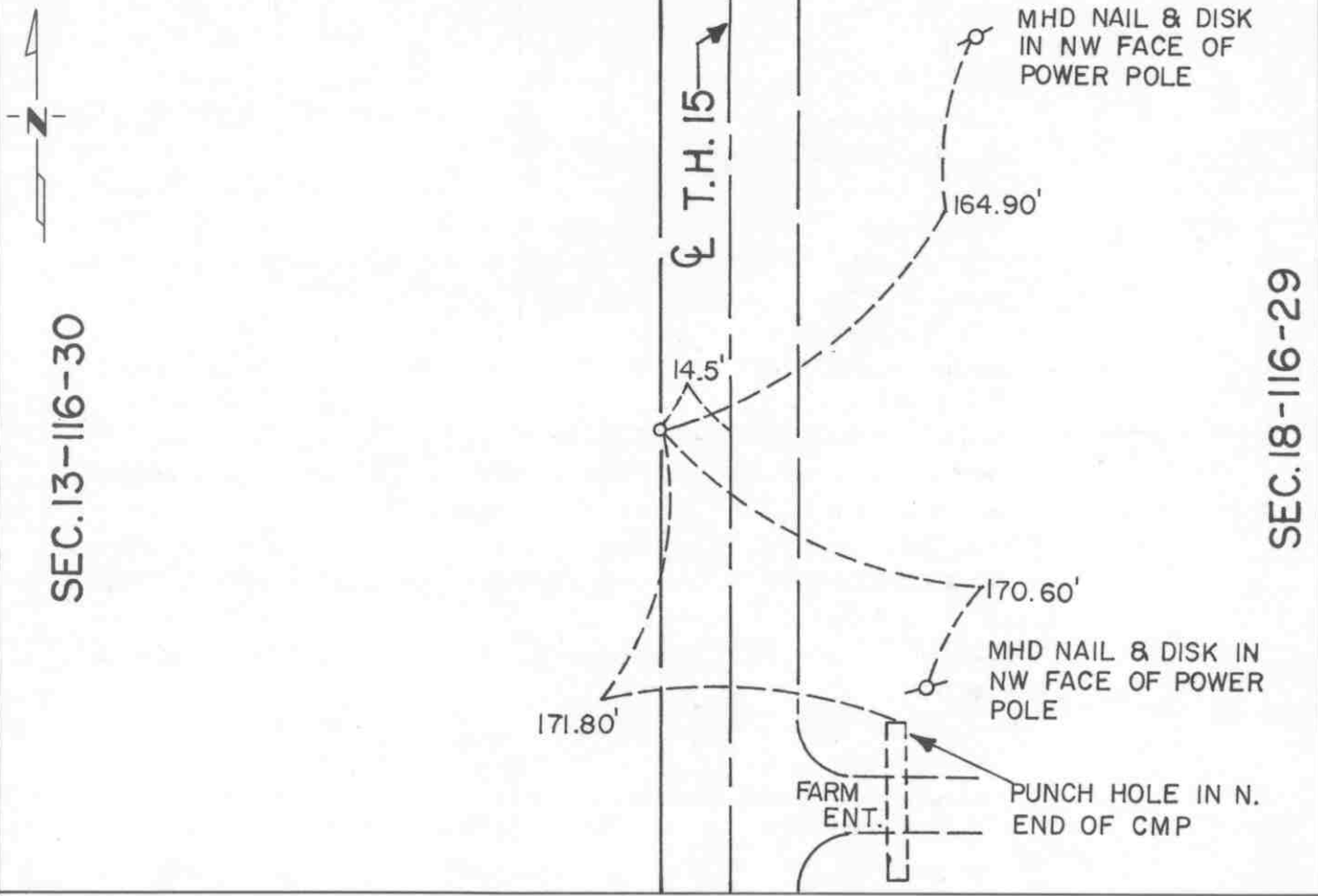
CERTIFICATE OF LOCATION OF GOVERNMENT CORNER

East Quarter _____ Corner of Section 13, Township 116 N, Range 30 W, 5th P.M.
 STATE OF MINNESOTA, County of McLeod

At the corner location shown on the sketch:

- On June 13, 1991 found a railroad spike at the surface of bituminous shoulder
DATE 14.5 feet west of the centerline of T.H. 15
- left monument as found, lowered monument, removed monument (explain)
- On _____ placed a _____
DATE

SKETCH OF REFERENCE TIES



Statement of evidence relative to this corner location is on back of page.

I hereby certify that this document and the data contained herein was prepared by me or under my direct supervision

Robert Gams 8-20-91
SIGNATURE DATE

Registration No. 11864

Land Surveyor, Professional Engineer
 County Surveyor, County Engineer

OFFICE OF THE COUNTY RECORDER
 County of McLeod

I hereby certify that this document was filed in the Co. Recorders office at 2 P .M. on the 10th day of Sep A.D. 1991

County Recorder Cherren Ostlie
 By _____, Deputy
 DOCUMENT NO. 241054

Statement of Evidence:

East Quarter Corner Section 13, T 116 N, R 30 W

- 1855 - The original Public Land Survey of the township line was completed by John Ryan. A wood post was set over a deposit of charcoal in a dirt mound to mark the corner. Trenches and pits were dug to build the mound. Osage orange was planted at the corners of the mound.
- 1941 - The Minnesota Highway Department right of way map shows the corner to be 14.8 feet west of T.H. 15 P.O.T. 1149+46.3. It was located at the intersection of the centerline of a north/south road with fence lines to the east and to the west.
- 1942 - All evidence of the corner was probably destroyed when T.H. 15 was graded.
- 1970 +/- Dickman Knutson, McLeod County Surveyor, found a railroad spike 14.8 feet west of the centerline of T.H. 15 and set a McLeod County cast iron monument to replace it.
- 1983 - R. C. Jones, Registered Land Surveyor with Mn/DOT, found the cast iron monument about 3" below the surface of the gravel shoulder of T.H. 15. It was located 14.73 feet west of T.H. 15 P.O.T. 1149+46.04. Reference ties were set and a certificate was filed with the McLeod County Recorder, Document No. 202054.
- 1989 - Willard Pellinen, McLeod County Surveyor, found an indication of iron and set a railroad spike at the surface of the bituminous shoulder of T.H. 15. The bituminous was widened by Mn/DOT sometime between 1983 and 1989 and the top of the cast iron monument may have been destroyed during that reconstruction.
- 1990 - A Mn/DOT survey crew recovered the railroad spike.
- 1991 - R. C. Jones found the railroad spike at the road surface.

The railroad spike is accepted as the corner location because it was found to be 14.50 feet west of T.H. 15 P.O.T. 1149+45.16, which substantially fits earlier locations, and it very nearly fits the reference ties set in 1983.

For additional information, contact the Mn/DOT Surveys Section at Willmar, Mn 56201.